



Spring Horticulture Day 2025

Presented by the Morrison County Master Gardeners

Saturday, March 29, 2025

Little Falls Community High School

Little Falls, MN

(Please park in the student parking lot located off of Ninth Street SE – watch for signs.)

8:30 a.m. – 12:00 p.m.



Registration Deadline is March 21, 2025

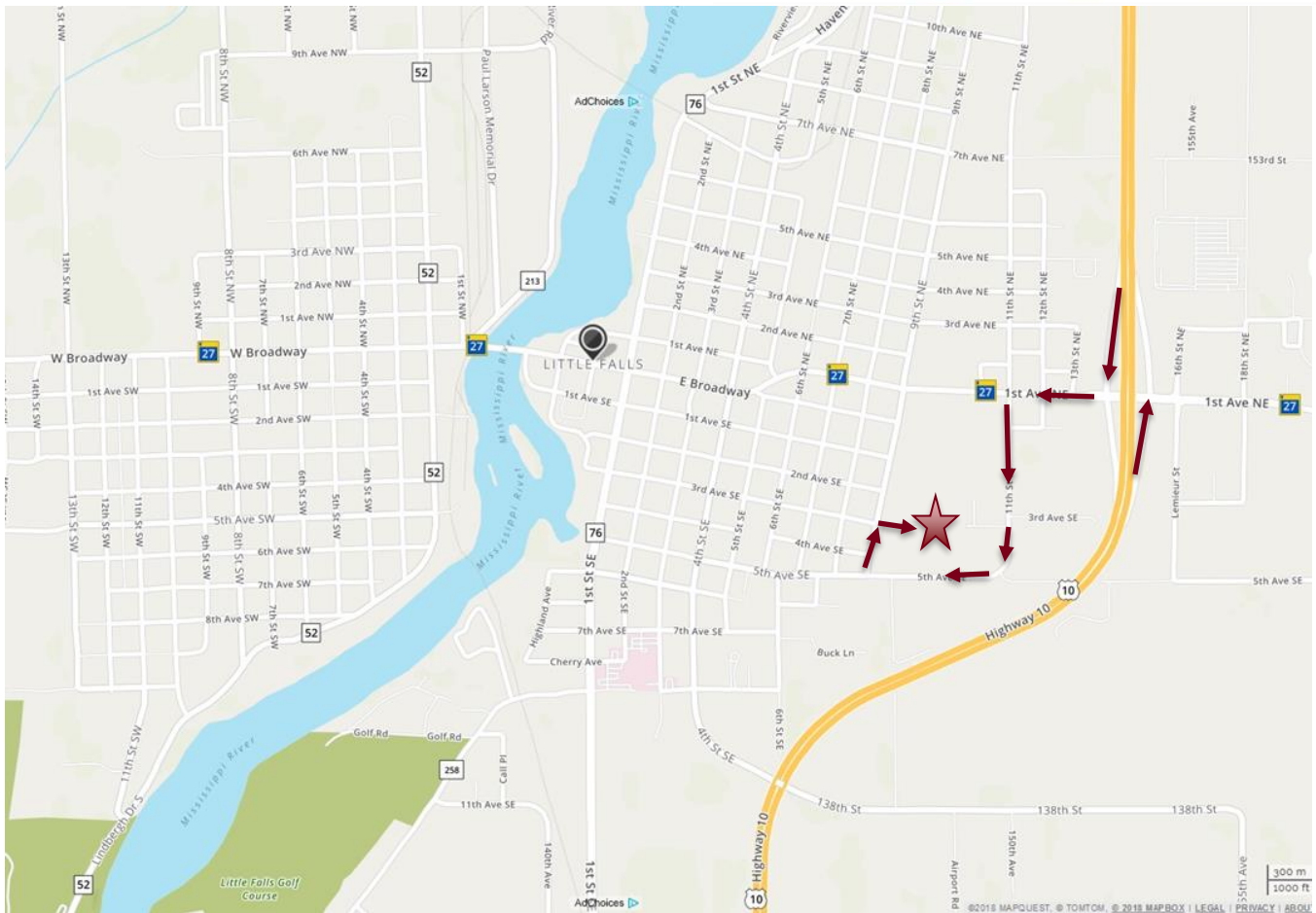
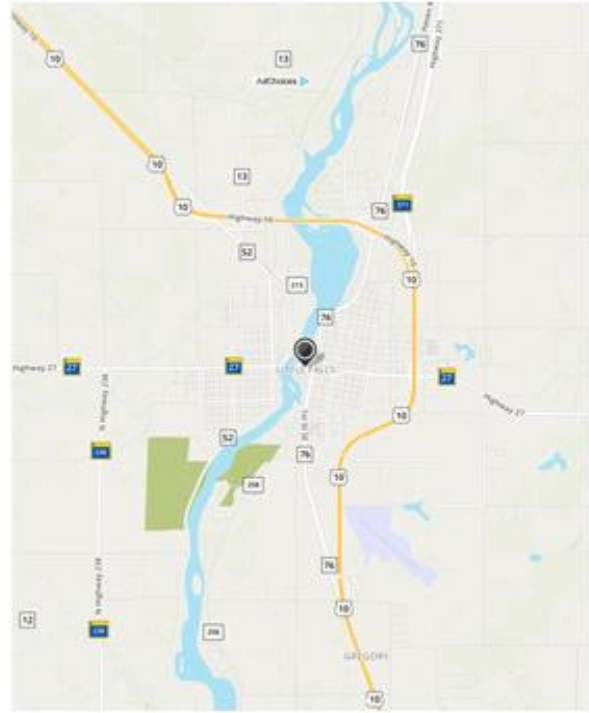
Pre-registration is requested. Cost is \$20 and includes morning refreshments.

Online registration: <https://forms.gle/cv41M6JeiGrcLUQFA>

From the North: Take Highway 10 to the Highway 27 exit. Turn right onto 27. Turn left onto 11th Street SE. Follow 11th Street SE around the curve until it turns into 5th Avenue SE. Turn right onto 9th Street SE. The driveway to the student parking lot will be approximately 2 blocks ahead on the right.

From the South: Follow Highway 10 to the Highway 27 Exit. Turn left onto 27. Turn left onto 11th Street SE. Follow 11th Street SE around the curve until it turns into 5th Avenue SE. Turn right onto 9th Street SE. The driveway to the student parking lot will be approximately 2 blocks ahead on the right.

If you need more directions, contact the Morrison County Extension Office at 320-632-0161, Monday through Friday, 8:00 a.m. to 4:30 p.m.



Sessions:

Session 1 (Keynote Speaker):

Best tree tip: see what your neighbor is planting and plant something else! – John Ball

Our reliance on too few trees has made emerald ash borer a major threat to Minnesota communities much as what happened with elms and Dutch elm disease in the 1970s. We also have the loom threat of pine wilt which is eliminating Austrian and Scotch pine from the landscape. This program will cover why emerald ash borer, Dutch elm disease and pine wilt became a threat and what trees we should be considering to create a more resilient community forest.

Session 2:

New Plants for 2024-2025 – Shelly Boser-Bartel

Still not a lot of new plants on the market, but we will cover what is in annuals, perennial, trees and shrubs. Information on those will include size, sun and soil needs, watering needs and basic care. We will also cover some tried and true varieties that are my favorite!

Trees & Turfgrass – Unnatural Neighbors – John Ball

Many homeowners want a bright green lawn dotted with beautiful trees. Unfortunately, these two plant types do not play well together. This session will cover the challenges of having trees and turfgrasses share space.

Shoreline Restoration – Shannon Wettstein

Discover innovative bioengineering methods that can naturally stabilize and restore eroding shorelines. From strategically placing native plants to building eco-friendly barriers, you'll learn practical, sustainable techniques that help protect the land while maintaining the natural beauty of your space. For those without shorelines, we'll explore how you can create wildlife ponds that mimic natural wetland ecosystems. These small-scale water features not only enhance your landscape but also provide vital habitats for pollinators, amphibians, and birds. You'll leave inspired to restore and protect your own corner of nature, no matter the size of your property!

This session is perfect for gardeners, landowners, and anyone interested in learning how to restore or protect shorelines and ponds—big or small. Whether you're tackling erosion on a lakeside property, creating a peaceful pond retreat, or simply looking to enhance your landscape with functional beauty, you'll walk away with the knowledge and tools to take action.

Session 3:

Small Space Vegetable Gardening – Pat Lytwyn and Jerry Wenzel

This session will help participants develop small space vegetable gardens that are in keeping with good management practices and are productive.

Native Plants/Flowers – Shannon Wettstein

Explore the fascinating world of native plants and flowers—your new secret weapon for soil health and garden success. We'll cover the best species to use for erosion control, pollinator support, and year-round color. Plus, you'll learn how to create low-maintenance, high-impact landscapes that thrive in harmony with their environment.

This session is perfect for gardeners looking to take their skills to the next level and create stunning, eco-friendly landscapes that work *with* nature, not against it. Whether you're tackling a lakeside retreat or restoring a perennial garden, you'll walk away with the tools and inspiration to make a positive impact on your environment.

Session 3 (Cont.):

Starting a New Bed! – Shelly Boser-Bartel

Whether it's a veggie, perennial or annual bed I've got some great info for you! We will go back to the basics covering soils, location and weed control. Types of beds from traditional in the ground, foundation planting to raised beds strictly for veggie needs. Information on fabric, fertilizing, soil health, sunlight needs or if you are just trying to fix a problem area. This will be a fun class with lots of ideas to make gardening more fun and less work!

Our Presenters:

John Ball – Keynote; Trees & Turfgrass – Unnatural Neighbors

John Ball is a professor of forestry at South Dakota State University where he instructs courses in tree care and forestry. He also serves as the extension forestry specialist and the state's forest health specialist. Dr. Ball has a PhD from Michigan State University but has made Minnesota and South Dakota home for the past 40 years.

Shelly Boser-Bartel – New Plants for 2024/2025; Starting a New Bed!

I'm Shelly Boser-Bartel, born and raised in Pierz, MN. My husband and I own and operate a 40 acre hobby farm north of Pierz, on it we have goats, laying hens, beef steers, 4 donkeys and a pot-bellied pig named Petunia. We have 13 perennial and one very large veggie garden that we enjoy taking care of. Hobbies include deer, bear and pheasant hunting, ice fishing, farming and of course gardening of all kinds. In my spare time I teach Firearms Safety, I am a Township supervisor and I'm very active in various Sportsman's clubs in the area. I attended college at CLC in Brainerd, earning various degrees in Horticulture programs, started working for Landsburg's in 1999. I started there working in perennials and made my way to Retail Sales manager, turns out I am good with people!! My love for plants is deep for perennials and trees and shrubs, but I can help in all others areas also. I absolutely love my job, the people I work for and with are the best. Most days it is not work, my biggest problem is the weather (when its bad or hot) and taxes. I hate taxes. Life is great and its short, my motto is less lawn more plants!

Shannon Wettstein – Shoreline Restoration; Native Plants/Flowers

Shannon Wettstein, District Manager for Morrison Soil and Water Conservation District holds an MBA from the University of Chester England and an Environmental Studies degree from the University of Minnesota Duluth. She has served in this role since 2018, prior to this she worked as the Water Planner for the Todd Soil and Water. Wettstein has been working in the conservation of natural resources since 2002. She is a master gardener in her home county, Todd and lives there, on a farm with her husband John and three young sons Wyatt, Elliott and Everett.

Pat Lytwyn & Jerry Wenzel – Small Space Vegetable Gardening

Pat Lytwyn has been a Master Gardener for more than 10 years. She lives in Randall. Her topics of special interest include vegetable gardening and tree health.

Jerry Wenzel is a retired science teacher and has been a Master Gardener since 2010. He lives near Randall where he and his wife, Kathy, maintain both large and small space vegetable gardens.

Registration fee includes cost of workshop, breakfast treats, refreshments, and session materials.

Pre-registration is requested.

Schedule of Events:

8:00 a.m. – 8:30 a.m.	Registration
8:30 a.m. – 9:30 a.m.	Keynote Speaker
9:45 a.m. – 10:45 a.m.	Session 2
11:00 a.m. – 12:00 p.m.	Session 3

Please choose one class from each session on the Registration Form. For more information on the session or presenters, please refer to the previous pages or contact the Morrison County Extension Office at 320-632-0161.

Registration Form

Name: _____

Address: _____

Email: _____ Phone Number: _____

Please pick one class from each session. (Please see class descriptions on prior pages.):

Session 2: New Plants for 2024-2025 Trees & Turfgrass Shoreline Restoration

Session 3: Starting a New Bed! Native Plants/Flowers Small Space Vegetable Gardening

Class sizes may be limited – please pick a first and second choice for Sessions 2 and 3.

Please return this registration form along with your registration fee of \$20.00 to U of M Extension - Morrison County, 213 First Avenue SE, Little Falls, MN 56345 by March 21, 2025. Checks should be made payable to “U of M”. You may also register online at [www.extension.umn.edu](#) and send payment.

